

REINVENT HOW THE WORLD CLEANS



# Product Guide

# Who we are

## A Legacy Built on Advancing the Industry

Founded in 1870 by George H. Tennant, Tennant Company began as a one-man woodworking business, evolved into a successful wood flooring and wood products company, and eventually into a manufacturer of floor cleaning equipment.

Throughout its history, Tennant has remained focused on advancing its industry by aggressively pursuing new technologies and creating a culture that celebrates innovation. Today, Tennant is a global leader in designing, manufacturing and marketing solutions that help create a cleaner, safer, healthier world.



George H. Tennant opens his small woodworking shop in northeast Minneapolis

**1870**



Tennant engineers invent the first vacuum-equipped power sweeper for industrial use

**1947**



GH Tennant Inc. goes public as Tennant Company

**1969**

**1932**

Tennant begins producing motorized floor cleaning equipment



**1963**

Tennant introduces the predecessor to the sweeper/scrubber, making Tennant units the most versatile in the world



**1970**

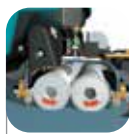
Tennant develops the first "built from the ground up" riding scrubber





Tennant introduces its first walk-behind scrubber

**1978**



Tennant introduces ReadySpace® quick-drying carpet cleaning technology

**2004**



Tennant introduces ec-H2O NanoClean® – the next generation of detergent-free cleaning

**2015**



Tennant Company celebrates 150 years in business

**2020**

**2002**

Tennant introduces FaST® Foam Scrubbing Technology for hard floor surfaces



**2008**

Tennant introduces ec-H2O™ technology that electrically converts water into an effective cleaning solution



**2018**

Tennant Company launches the T7AMR, an autonomous mobile robot designed to maximize productivity, increase efficiency and optimize safety



## Industry Leading Solutions

Tennant Company is a global leader in sustainable cleaning technologies. We design, manufacture, and market innovative cleaning equipment, parts and supplies, plus specialty coatings. For over 150 years, we have changed the way customers clean – and consistently raised expectations for cleaning performance. We invest in research and development that delivers new levels of cleaning efficiency and effectiveness. We develop sustainable cleaning technologies that help to create a cleaner, safer, healthier world. For leading solutions in cleaning, look to the industry leader: Tennant Company.

## Table of Contents

<b>05</b>	Innovations
<b>06</b>	Scrubbers
<b>12</b>	Rider-Scrubbers
<b>18</b>	Scrubber-Sweepers
<b>21</b>	Sweepers
<b>27</b>	Floor Machines & Burnishers
<b>30</b>	Carpet Extractors
<b>34</b>	Vacuums
<b>38</b>	Specialty Machines
<b>40</b>	Tennant True®

# Innovations

Changing How the World Cleans

1



3



2



4



5



1. **ec-H2O™ Technology** electrically converts water into an innovative cleaning solution that cleans effectively, saves money, improves safety, and reduces environmental impact\* compared to daily cleaning floor chemicals and methods.
2. **ec-H2O NanoClean® Technology** is the next generation of detergent-free cleaning that cleans effectively on a wider range of soils, saves money, and reduces environmental impact compared to daily floor cleaning chemicals.
3. **ReadySpace® Rapid-Drying Carpet Cleaning Technology** provides fresh, clean carpets in minutes to reduce room and carpet area closure times.
4. **Extended Scrubbing® (ES) Technology** recycles cleaning solutions to extend scrubbing time resulting in extended scrubbing uptime and improved productivity.
5. **IRIS® Asset Manager** offers intelligent insights and key performance metrics to help manage and monitor your machines and make informed decisions to drive your cleaning operations forward.

# Walk-Behind Scrubbers

Dependable, long-lasting solutions for all your floor care need



## CS5

### MICRO-SCRUBBER

#### Applications

Hard floors found in small buildings such as convenience stores and restaurants and small spaces in big buildings like patient rooms, restrooms and classrooms.

#### Model Highlights

- The small size and portable design make it as convenient as a mop and bucket, but it cleans and dries faster.
- Powered by a lightweight and compact lithium battery.
- Reverse dry system eliminates the need to turn allowing for cleaning in tight spaces.

Cleaning Path: 280 mm  
Solution | Recovery Tank: 5 L | 5 L  
Sound Level: 63 dBA  
Power Source: battery  
Run Time: up to 75 mins



## CS16

### WALK-BEHIND MICRO-SCRUBBER

#### Applications

Hard floors in buildings that have smaller spaces, potentially with obstructions, such as, restaurants, restrooms, lobby area, classrooms and more.

#### Model Highlights

- Robust construction in a compact scrubber with easy-to-use pad assist or self-propel operation
- Avoid kneeling to put the brush on, with hands-free brush replacement with spin-on, spin-off feature.
- Intuitive control panel with Eco mode for reduced noise levels.

Cleaning Path: 350 mm  
Solution | Recovery Tank: 15 L | 16.5 L  
Sound Level= 68 dBA | 66 dBA (eco mode)  
Power Source: battery  
Run Time: Standard - 60 mins | Eco Mode - 70 mins



## T1/T1B

### MICRO SCRUBBERS

#### Applications

Hard floors often found in retail, health care, hospitality, airports, and schools.

#### Model Highlights

- Clean small, tight, hard-to-reach spaces with compact, maneuverable rugged design.
- Reduce operator fatigue and improve productivity with Insta-Adjust™ ergonomic handle.
- Reduce risk of slip-and-fall accidents with excellent water recovery.

Cleaning Path: 380 mm

Solution | Recovery Tank:

T1 – 11.4 L | 17.0 L

T1B – 9.5 L | 12.9 L

Sound Level: T1 – 72 dBA | T1B – 68 dBA

Power Source: corded | battery

Run Time: T1B – AGM – 45mins | T1B – Lithium-Ion – 60 mins



## T2

### WALK-BEHIND SCRUBBER

#### Applications

Hard floors often found in retail, health care, hospitality, airports, and schools.

#### Model Highlights

- Experience Tennant performance while maintaining your budget to clean small, congested spaces easily.
- Deliver outstanding cleaning and floor safety with the 1.0 hp / 0.75 kW brush motor and water recovery.
- Unique storage and transport features make this scrubber perfect for small areas and route cleaning.

Cleaning Path: 430 mm

Solution | Recovery Tank: 26 L | 36 L

Sound Level: 68 dBA

Power Source: battery

Run Time: up to 2 hours



## T290

### WALK-BEHIND SCRUBBER

#### Applications

Ideal for cleaning small, congested areas with hard floors found in retail stores and schools.

#### Model Highlights

- A compact scrubber with easy-to-use pad assist or self-propel configuration.
- Avoid kneeling to put the brush on, with hands-free brush replacement with spin-on, spin-off feature.
- Yellow touch points help reduce breakdowns by simplifying preventative maintenance.

Cleaning Path: 500 mm  
Solution | Recovery Tank: 40 L | 50 L  
Sound Level: 74 dBA  
Power Source: battery  
Run Time: up to 3 hours



## T291

### SMALL WALK-BEHIND SCRUBBER-DRYER

#### Applications

Ideal for cleaning small areas with hard floors often found in retail, healthcare, hospitality, and schools.

#### Model Highlights

- Maintain operator health and safety with great maneuverability, and maximize comfort with adjustable controls.
- Excellent water pickup from easily adjustable squeegee design and standard Linatex® blades.
- Reduce noise levels and water consumption while increasing run-time with ECO mode.

Cleaning Path: 500 mm  
Solution | Recovery Tank: 50 L | 50 L  
Sound Level: 56 dBA  
Power Source: battery  
Run Time: up to 3.5 hours





## T300

### WALK-BEHIND SCRUBBER

#### Applications

Hard floors often found in retail, health care, hospitality, airports, and schools.

#### Model Highlights

- Delivering high performance, consistent results for virtually any hard surface condition while lowering cleaning costs.
- Offers multiple machine head types to fit your cleaning applications and optimize cleaning performance for specific areas – single disk, dual disk, dual cylindrical, and orbital.
- Improved and durable components extend machine life and reduce cost of ownership.
- Available with ec-H2O NanoClean® technology and IRIS Asset Manager.

Cleaning Path: disk / cylindrical / orbital – 500 mm | dual disk – 600 mm  
 Solution | Recovery Tank: 42 L | 53 L  
 Sound Level: single disk – 64.9/67 dBA | dual disk 66.5/67.7 dBA |  
 cylindrical – 65.6/68.7 dBA | orbital – 66.4/67.5 dBA  
 Power Source: battery  
 Run Time: up to 3 hours



## T390

### WALK-BEHIND SCRUBBER

#### Applications

Ideal for medium sized spaces with hard floors found in schools, hospitals and retail stores.

#### Model Highlights

- Scrub deck made out of tough steel material, with roller guide wheels to protect the facility.
- Increase productivity with the dual disk cleaning path while still having the maneuverability of a mid-size scrubber.
- Yellow touch points help reduce breakdowns by simplifying preventative maintenance.

Cleaning Path: 700 mm  
 Solution | Recovery Tank: 65 L | 70 L  
 Sound Level: 73 dBA  
 Power Source: battery  
 Run Time: up to 2.3 hours



## T391

### MID-SIZE WALK-BEHIND SCRUBBER-DRYER

#### Applications

Ideal for medium sized spaces with hard and decorative floors often found in retail, healthcare, hospitality, and schools.

#### Model Highlights

- Get more cleaning done compared to smaller scrubbers with wide scrub path and large solution tank capacity.
- Maintain operator health and safety with great maneuverability, and maximize comfort with adjustable controls.
- Reduce noise levels and water consumption while increasing run-time with ECO mode.

Cleaning Path: 700 mm  
Solution | Recovery Tank: 70 L | 70 L  
Sound Level: 56 dBA  
Power Source: battery  
Run Time: up to 3.5 hours



## T500/T500e

### WALK-BEHIND SCRUBBER

#### Applications

Hard and decorative floors often found in retail, health care, hospitality, airports, schools, and light industrial facilities.

#### Model Highlights

- Exclusive Smart-Fill™ automatic battery watering technology makes battery maintenance safe by removing the task of checking, opening, and filling flooded batteries.
- Deliver predictable results, extend machine life, and reduce cost of ownership with an innovative suite of technologies.
- Improved and durable components extend machine life and reduce cost of ownership.
- Available with ec-H2O NanoClean® technology and IRIS Asset Manager.

Cleaning Path: disk – 650, 700, 800 mm | orbital/cylindrical – 700 mm  
Solution | Recovery Tank: 85 L | 102 L  
Sound Level: disk – 66.5/67.4 dBA | orbital – 67.0/ 68.3 dBA |  
cylindrical – 66.4/66.9 dBA  
Power Source: battery  
Run Time: up to 5.9 hours



## T600/T600e

### WALK-BEHIND SCRUBBER

#### Applications

Hard and decorative floors often found in retail, healthcare, education, hospitality, offices, logistics and manufacturing.

#### Model Highlights

- Scrub longer between empty and fill cycles with large-capacity solution and recovery tanks.
- Clean a variety of surfaces with a wide range of cleaning head options.
- Smart-Fill™ automatic battery watering system offers virtually worry-free battery maintenance.
- Available with ec-H2O NanoClean® technology and IRIS Asset Manager.

Cleaning Path: 700, 800 or 900 mm

Solution | Recovery Tank: 121 L | 140 L

Sound Level: dual disk – 62.2/69.5 dBA | cylindrical – 62.2/69.2 dBA | orbital – 62.3/69.5 dBA

Power Source: battery

Run Time: up to 8 hours

# Ride-On Scrubbers

Trust Tennant scrubbers to deliver a reliable, lasting clean



## T380AMR

### AUTONOMOUS RIDE-ON SCRUBBER

#### Applications

Hard Floors found in retail, education, healthcare & public settings.

#### Model Highlights

- Specifically designed for robotics, this AMR product provides maximum productivity with 500 mm deck size and 75 L solution tanks.
- Highly maneuverable robotic scrubber for areas that require tighter turns.
- Delivers best-in-class cleaning performance with up to 40 kg of down pressure and excellent water recovery with squeegee located directly behind scrub deck.

Cleaning Path: disk: 500 mm  
Coverage Rate: manual: 3,106 m<sup>2</sup>  
Solution | Recovery Tank: 75 L | 75 L  
Power Source: battery  
Run Time: up to 4 hours



## T581

### MICRO RIDE-ON SCRUBBER

#### Applications

Cleaning large spaces with hard floors in areas such as retail stores, hospitals and schools.

#### Model Highlights

- Compact design easily fits into most congested spaces, and can quickly reach many areas of a facility to get more cleaning done.
- Ease of start-up and quick training with one-button cleaning operation that lowers the scrub head and squeegee at the same time.
- Increase run-times by nearly 20% with ECO mode that decreases battery consumption during operation.

Cleaning Path: 600 mm  
Solution | Recovery Tank: 78.5 L | 80 L  
Sound Level: 65 dBA  
Power Source: battery  
Run Time: up to 4 hours



## T681

### SMALL RIDE-ON SCRUBBER

#### Applications

Ideal for cleaning medium to large spaces like retail stores, hospitals, and schools.

#### Model Highlights

- Small yet highly maneuverable dual disk ride-on scrubber.
- Simple operation with adjustable cleaning settings with large easy-to-use control panel.
- Effectively clean across different surface levels with automatic scrub head level adjustment.
- Ensure consistent and correct chemical usage with integrated Chem-Dose System for continuous operation and cost savings
- Enhance facility image and safety by recovering more water with high-performance 3-stage vacuum motor.

Cleaning Path: 700 mm  
Solution | Recovery Tank: 100 L | 110L  
Sound Level: 75 dBA  
Power Source: battery  
Run Time: up to 3.5 hours



## T7

### RIDE-ON SCRUBBER

#### Applications

Decorative floors often found in retail, health care, hospitality, airports, schools, and light industrial facilities.

#### Model Highlights

- Small-rider T7 delivers advanced cleanliness at a sound level 75% quieter than competitive models.
- Nimble enough to scrub through doorways, and compact enough to fit on standard elevators.

Cleaning Path: disk: 660 or 810 mm | cylindrical: 710 or 810 mm  
Solution | Recovery Tank: 110 L | 110 L  
Sound level: disk: 67 dBA | cylindrical: 69 dBA  
Power Source: battery  
Run Time: up to 4.5 hours





## T7AMR

### AUTONOMOUS RIDE-ON SCRUBBER

#### Applications

Hard floor surfaces often found in retail, healthcare, airports, schools, and light duty warehousing and manufacturing.

#### Model Highlights

- Safely operate and avoid obstacles in complex, real-world environments with the T7AMR robotic cleaning machine, powered by BrainOS advanced vision based A.I. system
- Address labor challenges, drive efficiencies and maintain a high standard of cleaning.
- Teach and repeat model ensures consistent cleaning performance.
- Leverage data to optimize your cleaning operations.

Cleaning Path: disk: 650 mm

Coverage Rate: manual: 4,250 m<sup>2</sup> | autonomous: 2,660 m<sup>2</sup>

Solution | Recovery Tank: 110 L | 110 L

Sound level: disk: 70 dBA

Power Source: battery

Run Time: up to 4 hours | up to 6.5 hours (Lithium-Ion)



## T981 NEW

### RIDER SCRUBBER

#### Applications

Hard floors found in logistics, retail, light industry.

#### Model Highlights

- Three preset scrubbing operation programs for quick start-up & ease of training.
- Available in both disk and cylindrical scrub heads, customers choose the scrub head that is best suited for their floor application.
- Easy Spin-on/spin-off brushes on disk model simplify brush changeout without bending.
- Standard sweeping side brushes on cylindrical model over
- Recover more water with high-performance 3-stage vacuum motor.
- Reduce maintenance time by easily accessing service areas with removeable panels.

Cleaning Path: 750 mm (cylindrical) | 900 mm (disk)

Solution | Recovery Tank: 125 L | 135 L

Sound Level: 72 dBA

Power Source: battery

Run Time: up to 4.6 hours



## T12

### COMPACT RIDE-ON SCRUBBER

#### Applications

Hard and decorative floors often found in retail, health care, hospitality, airports, schools, and industrial facilities.

#### Model Highlights

- Highly maneuverable T12 can reach tight spaces with its smaller, compact footprint and tight turning radius.
- The battery powered rider scrubber combines innovative features and substantial power to help reduce time spent cleaning and provide heavy-duty compact performance.

Cleaning Path: 810 mm  
Solution | Recovery Tank: 132 L | 166 L  
Sound Level: 63 dBA  
Power Source: battery  
Run Time: up to 4.5 hours



## T1581

NEW

### RIDER SCRUBBER

#### Applications

Hard floors found in logistics, retail, light industry.

#### Model Highlights

- Three preset scrubbing operation programs for quick start-up & ease of training.
- Available in both disk and cylindrical scrub heads customers choose the scrub head that is best suited for their floor application.
- Self-leveling system that automatically adjusts the scrub deck height to a floor's surface.
- Standard sweeping side brushes on cylindrical model over.
- Recover more water with high-performance 3-stage vacuum motor and durable v-shaped squeegee design.
- Reduce maintenance time by easily accessing service areas.

Cleaning Path: 1,050 mm | 1,000 mm  
Solution | Recovery Tank: 218 L | 237 L  
Sound Level: 76 dBA | 79 dBA  
Power Source: battery  
Run Time: up to 4 hours



## T16

### RIDE-ON SCRUBBER

#### Applications

Dried liquid, grease and grime often found in distribution and storage facilities, food & beverage plants, and malls.

#### Model Highlights

- Achieve a lower cost of ownership with Tennant's quality construction and innovative technologies.
- Clean anytime, anywhere with sound levels at 68 dBA.
- Enhance productivity and safety with an user-friendly design and Touch-n-Go™ controls from the steering wheel.
- Available with a variety of solution technologies to match different applications such as conventional, conventional with detergent metering, ec-H2O® with Severe Environment capability and ES® recycling with detergent metering.

Cleaning Path: 910 mm | 1,145 mm with side brush  
 Solution | Recovery Tank: 190 L | 225 L  
 Sound Level: 68 dBA  
 Power Source: battery  
 Run Time: up to 4 hours | up to 5.4 hours (Lithium-Ion)



## T16AMR

### AUTONOMOUS RIDE-ON SCRUBBER

#### Applications

Hard floors found in large spaces like warehouses, manufacturing, and third party logistics facilities.

#### Model Highlights

- Address common labour challenges, reduce the need for pre-sweeping, drive efficiencies and maintain a high standard of cleaning with the T16AMR, an industrial robotic solution designed to work safely and efficiently alongside employees.
- Engineered for autonomous cleaning, increasing safety and maximizing productivity.
- Reduce detergent usage and use less water, both saving you money and minimizing your environmental impact, with ec-H2O NanoClean® technology.
- Clean thoroughly in a single pass with a cylindrical scrub head and high-performance vacuum system.

Cleaning Path: 910 mm  
 Solution | Recovery Tank: 190 L | 225 L  
 Power Source: battery  
 Run Time: up to 4.0 hours | up to 5.4 hours (Lithium-Ion)





## T17

### RIDE-ON SCRUBBER

#### Applications

An innovative high-performance, heavy-duty battery rider scrubber for the toughest cleaning needs.

#### Model Highlights

- Clean 7-8 hour shift in economy mode, on a single charge, with the largest available battery capacity in its class.
- Reduce slips and falls with water recovery system that leaves floors virtually dry.
- Engineered for easy operator and maintenance experience.
- Maintain clean indoor air quality with large capacity battery power source.

Cleaning Path: 1,015 mm  
 Solution | Recovery Tank: 285 L | 346 L  
 Sound Level: disk - 65dBA | cylindrical - 66 dBA  
 Power Source: battery  
 Run Time: up to 7.5 hours



## T20

### RIDE-ON SCRUBBER

#### Applications

Heavy grease and grime found in large warehouses, factories, municipalities, and parking ramps.

#### Model Highlights

- Achieve excellent cleaning results with aggressive scrubbing and MaxPro2™ hydraulic technology.
- Maximize productivity with ec-H2O® technology for cleaning up to three times longer than conventional scrubbing.
- Improve operator visibility with steering-wheel-mounted controls.
- Available with a variety of solution technologies to match different applications such as conventional, conventional with detergent metering, ec-H2O® and ES® recycling with detergent metering.

Cleaning Path: up to 1,420 mm  
 Solution | Recovery Tank: 303 L | 360 L  
 Sound Level: 82 dBA  
 Power Source: gasoline, LPG, diesel

# Scrubber-Sweepers

Boost productivity with double-duty models that deliver excellent sweeping and scrubbing performance in one machine



## M17

### SWEEPER-SCRUBBER

#### Applications

Heavy manufacturing and warehousing environments desiring exhaust-fume-free battery operation for anytime cleaning.

#### Model Highlights

- Effectively clean in one pass with exceptional sweeping and scrubbing performance.
- Maintain indoor air quality with high capacity batteries and two-stage dust control system.
- Large battery capacity options extend runtime for increased productivity.
- Improve operator visibility with steering-wheel-mounted controls.
- Available with a variety of solution technologies to match different applications such as conventional, conventional with detergent metering, ec-H2O® with Severe Environment capability and ES® recycling with detergent metering.

Cleaning Path: 1,015, 1,220 mm  
Solution | Recovery Tank: 285 L | 346 L  
Hopper Capacity: 85 L | 136 kg  
Power Source: battery



## M20

### SWEeper-SCRUBBER

#### Applications

Medium to heavy dirt, sand, bulky litter and broken glass often found at indoor/outdoor industrial facilities, schools, plazas, and municipalities.

#### Model Highlights

- Effectively clean in just one pass with FloorSmart® integrated cleaning system technology.
- Achieve excellent cleaning results with ec-H2O™ technology and MaxPro2™ hydraulic technology.
- Improve operator visibility with steering-wheel-mounted controls.
- Available with a variety of solution technologies to match different applications such as conventional, conventional with detergent metering, ec-H2O® and ES® recycling with detergent metering.

Cleaning Path: 1,020 mm  
Solution | Recovery Tank: 212 L | 276 L  
Hopper Capacity: 110 L | 177 kg  
Power Source: gasoline, diesel, LPG



## M30

### SWEeper-SCRUBBER

#### Applications

Bulky debris, steel powder, pellets, rocks, and glass often found in harsh industrial and manufacturing environments.

#### Model Highlights

- Effectively clean in just one pass with FloorSmart® integrated cleaning system technology.
- Achieve excellent cleaning results with ec-H2O™ technology and MaxPro2™ hydraulic technology.
- Improve operator visibility with steering-wheel-mounted controls.

Cleaning Path: 1,220 mm  
Solution | Recovery Tank: 284 L | 360 L  
Hopper Capacity: 198 L | 295 kg  
Power Source: gasoline, diesel, LPG

# Sweepers

Control dust and debris with a Tennant indoor or outdoor floor cleaning machine.



## S7

### BATTERY SWEEPER

#### Applications

Clean both hard floors and carpeted spaces with the versatile, quiet and efficient S7 walk-behind battery-operated sweeper.

#### Model Highlights

- Transaxle drive unit promotes operator ease of use.
- Flap trap lever allows for pick up of bulkier items.
- Breathe easy as 99.5% filtration up to 5 microns.

Cleaning Path: 700 mm  
Hopper Capacity: 45 L  
Sound Level: 70 dBA  
Power Source: battery  
Run Time: up to 3 hours



## S10

### INDUSTRIAL SWEEPER

#### Applications

Preferred sweeper in medium to heavy industrial facilities.

#### Model Highlights

- Best-in-class walk-behind sweeps tight and open areas.
- Increase uptime with the largest hopper of any walk-behind sweeper (contains up to 150 lbs / 68 kg of debris).

Cleaning Path: 860 mm  
Hopper Capacity: 79 L  
Sound Level: 73 dBA  
Power Source: battery  
Run Time: up to 3 hours



## 3640

### WALK-BEHIND SWEEPER

#### Applications

Preferred sweepers in light industrial facilities.

#### Model Highlights

- Robust walk-behind picks up debris from sand to litter, indoors and out.
- Available in battery power platform only with dust-controlling filter systems.

Cleaning Path: 810 mm  
Hopper Capacity: 85 L  
Sound Level: 70 dBA  
Power Source: battery  
Run Time: up to 4.5 hours

## 3640 HEPA

### WALK-BEHIND SWEEPER

#### Applications

Preferred sweepers in light industrial facilities.

#### Model Highlights

- Help create a healthier environment for your operators and customers by trapping dust with HEPA filtration
- Help manage your silica dust exposure control plan with our HEPA filtration system providing a filtration efficiency of 99.97% to 0.3 microns.
- HEPA panel filter with timed shaker provides better dust control.

Cleaning Path: 810 mm  
Hopper Capacity: 85 L  
Sound Level: 70 dBA  
Power Source: battery  
Run Time: up to 4.5 hours





## S680 NEW

### COMPACT BATTERY RIDE-ON SWEEPER

#### Applications

Effectively clean in tight spaces and large openings within light- to medium-duty applications with this simple-to-use and highly maneuverable, compact ride-on sweeper.

#### Model Highlights

- Clean a variety of hard floor and carpeted surfaces with non-marking materials and a self-leveling main brush that automatically adapts to surfaces.
- Ensure successful operation and simplify operator training with easy-to-use controls featuring pre-programmed working settings.
- Clean quietly and maintain air quality with battery operation.
- Available with optional carpet care kit.

Cleaning Path: 650 mm | 1050 mm (side brushes)

Hopper Capacity: 70 L

Power Source: battery



## S780 NEW

### COMPACT BATTERY RIDE-ON SWEEPER

#### Applications

Effectively clean a variety of light- to medium-duty indoor and outdoor environments. Clean quietly and maintain air quality with fume-free, battery operation.

#### Highlights

- Ensure successful operation with intuitive operator controls, an automatic filter cleaning system, and tool-free main brush replacement.
- Large hopper capacity and a wide sweep path enable operators to clean longer without interruptions.
- Clean quietly and maintain air quality with battery operation.

Cleaning Path: 680 mm | 1200 mm (side brushes)

Hopper Capacity: 61 L

Power Source: battery



## 6100

### SUB-COMPACT SWEEPER

#### Applications

Light dirt and paper litter often found indoors, in malls, and on carpets.

#### Model Highlights

- Compact design fits through most doors, onto elevators and in tight industrial environments.
- Sweeps surfaces from smooth concrete to finished floors, even carpets.
- Non-corrosive hopper with replaceable steel skidplate delivers outstanding durability.

Cleaning Path: single side brush: 760 mm | dual side brush: 970 mm  
Hopper Capacity: 85 L  
Sound Level: 77 dBA  
Power Source: battery  
Run Time: up to 5 hours



## S16

### COMPACT BATTERY-POWERED RIDE-ON SWEEPER

#### Applications

Light dirt, sand and paper litter often found in light industrial facilities, warehouses, convention centers, and airports.

#### Model Highlights

- Providing big productivity and versatility in a battery-powered compact ride-on sweeper, the S16 delivers exceptional sweeping performance across a variety of surfaces and debris types including hard and soft floors.
- Achieve impressive dust control with a multi-stage filtration system and maintain air quality with fume-free operation.
- Available in either a powered high-dump configuration or manual low-dump configuration to effectively manage swept debris.
- Available with optional HEPA filtration

Cleaning Path: single brush: 1,170 mm | dual side brush: 1,520 mm  
Hopper Capacity: 150 L  
Power Source: battery  
Run Time: up to 3.5 hours





## S20

### COMPACT MID-SIZE SWEEPER

#### Applications

Medium dirt, sand and paper litter often found in light industrial facilities, warehouses and mining.

#### Model Highlights

- Picks up everything from dust and sand to broken glass and litter, even. in narrow aisles and congested areas
- Engineered with focus on safety for the operator and the environment.
- Compact size provides maneuverability.
- Available with optional HEPA filtration and Dry Dust Control or WaterShield™ Dust Control

Cleaning Path: single side brush: 1,270 mm | dual side brush: 1,575 mm  
Hopper Capacity: 319 L  
Power source: battery, gasoline, diesel, LPG  
Run Time: up to 4.5 hours (battery)



## S20 HEPA

### COMPACT MID-SIZED SWEEPER WITH HEPA FILTRATION SYSTEM

#### Applications

Medium dirt, sand and paper litter often found in light industrial facilities, warehouses and mining.

#### Model Highlights

- Help manage your silica dust exposure control plan with our HEPA filtration system providing a filtration efficiency of 99.97% to 0.3 microns.
- Picks up everything from dust and sand to broken glass and litter, even. in narrow aisles and congested areas.
- Engineered with focus on safety for the operator and the environment with optional overhead guard and dust suppression skirts.

Cleaning Path: single side brush: 1,270 mm | dual side brush: 1,575 mm  
Hopper Capacity: 319 L  
Power source: battery, gasoline, diesel, LPG  
Run Time: up to 4.5 hours (battery)



## S30

### MID-SIZED SWEEPER

#### Applications

Heavy dirt, bulky litter and broken glass often found in industrial facilities, warehouses, parking decks, and municipalities.

#### Model Highlights

- Provide excellent indoor and outdoor dust control with the SweepMax Plus system.
- Available with optional HEPA Filtration with Dry Dust Control or WaterShield™ Dust Control to ensure a healthy and safe environment.
- Deliver easy operation and maintenance while running at peak performance.

Cleaning Path: single side brush: 1,590 mm | dual side brush: 2,032 mm  
Hopper Capacity: 395 L  
Sound Level: 80 dBA  
Power Source: gasoline, diesel, LPG



## S30 HEPA

### MID-SIZED SWEEPER WITH HEPA FILTRATION SYSTEM

#### Applications

Heavy dirt, bulky litter and broken glass often found in industrial facilities, warehouses, parking decks, and municipalities.

#### Model Highlights

- Help manage your silica dust exposure control plan with our HEPA filtration system providing a filtration efficiency of 99.97% to 0.3 microns.
- Picks up everything from dust and sand to broken glass and litter, even in narrow aisles and congested areas.
- FOPS certified pressurized cabin (CAF HEPA filter), available with heat and air conditioning and optional digital gauge with alarm.
- Dust suppression skirts increase operator safety and reduce operator fatigue.

Cleaning Path: single side brush: 1,590 mm | dual side brush: 2,032 mm  
Hopper Capacity: 395 L  
Sound Level: 80 dBA  
Power Source: gasoline, diesel, LPG



## 800

### INDUSTRIAL SWEEPER

#### Applications

Bulky debris, steel powder, pellets, rocks, and glass often found in harsh industrial and manufacturing environments.

#### Model Highlights

- Withstands heavy use in severe environments with a massive steel frame T-beam and bumpers.
- Sweeps as much as 18,600 m<sup>2</sup> in one hour and collects up to 907 kg of debris in a single hopper load.
- Available with optional HEPA Filtration with Dry Dust Control or WaterShield™ Dust Control to ensure a healthy and safe environment.

Cleaning Path: single side brush 1,675 mm | dual side brush 2,080 mm  
Hopper Capacity: 850 L  
Sound Level: 83 dBA  
Power Source: gasoline, diesel, LPG



## 800 HEPA

### INDUSTRIAL SWEEPER WITH HEPA FILTRATION SYSTEM

#### Applications

Bulky debris, steel powder, pellets, rocks, and glass often found in harsh industrial and manufacturing environments.

#### Model Highlights

- Help manage your silica dust exposure control plan with our HEPA filtration system providing a filtration efficiency of 99.97% to 0.3 microns.
- The quad filtering system includes four high-efficiency filters that trap particles capturing virtually all airborne dust.
- Certified Pressurized cabin (HEPA filter), available with heat and air conditioning, optional digital gauge with alarm.
- Dust suppression skirts to maximize operator protection in the harshest of environments.

Cleaning Path: single side brush 1,675 mm | dual side brush 2,080 mm  
Hopper Capacity: 850 L  
Sound Level: 83 dBA  
Power source: gasoline, diesel, LPG

# Floor Machines/Burnishers

Get excellent gloss performance with tennant's high-speed burnishers



## BR-2000-DC

### BURNISHER

#### Applications

Burnishers to polish a wide range of hard floor types.

#### Model Highlights

- Ultra high-speed burnishing delivers an outstanding shine while controlling dust.
- Extremely smooth and quiet operation in a durable model that withstands years of use.

Cleaning Path: 510 mm  
Pad Speed: 2,000 rpm  
Pad Pressure: up to 20 kg  
Sound Level: 66 dBA  
Power Source: corded



## B5

### BURNISHERS

#### Applications

Burnishers to polish a wide range of hard floor types.

#### Model Highlights

- High performance, propane-like gloss results without fumes and propane tank storage costs or concerns.
- Innovative 90 degree flip up head design enables a safe ergonomic position when changing pad
- Active filtration with HEPA standard maintains indoor air quality.

Cleaning Path: 510 mm  
Pad Speed: 2,100 rpm  
Sound Level: active 63-64 dBA | passive 65 dBA  
Power Source: battery  
Run Time: up to 3.5 hours



# B10

## BURNISHER

### Applications

Burnishers to polish a wide range of hard floor types.

### Model Highlights

- Rider burnisher accommodates large areas quickly and easily with 20% more horsepower than the leading competitor for bright, shiny floors.
- Active 4-stage HEPA filtration dust control system improves indoor environmental quality.

Cleaning Path: 610 mm | 686 mm

Pad Speed: 1,500 – 1,600 RPM

Pad Pressure: up to 114 kg

Sound Level: 69 dBA

Power Source: battery

Run Time: up to 3 hours

# Carpet Extractors

Outstanding carpet cleaning results from reliable machines



## E5

### DEEP CLEANING EXTRACTOR

#### Applications

Compact, low-profile carpet cleaners.

#### Model Highlights

- Clean small, tight, hard-to-reach spaces with compact, maneuverable design.
- Fill and empty tanks almost anywhere with ergonomic lift off design.
- Free floating brush automatically adjusts to different carpet pile heights.

Cleaning Path: 380 mm  
Solution | Recovery Tank: 19 L | 19 L  
Water Lift: 2,180 mm  
Sound Level: 69 dBA  
Power Source: corded



## 1610

### DUAL TECHNOLOGY EXTRACTOR

#### Applications

Clean in time sensitive applications with ReadySpace®, or achieve maximum soil removal with periodic deep extraction.

#### Model Highlights

- Dual technologies provide maximum power and flexibility to tackle the challenges of ongoing carpet maintenance.
- Create beautiful carpets in minutes with ReadySpace technology, or remove deeply-embedded dirt with deep extraction.

Cleaning Path: 560 mm  
Solution | Recovery Tank: 79 L | 79 L  
Water Lift: 3,050 mm  
Sound Level: 72 dBA  
Power Source: battery





# R14

## DUAL TECHNOLOGY EXTRACTOR

### Applications

Clean in time sensitive applications with ReadySpace, or achieve maximum soil removal with periodic deep extraction.

### Model Highlights

- Versatile dual-technology carpet cleaning from a single rider machine.
- Create beautiful carpets in minutes with ReadySpace technology, or remove deeply-embedded dirt with deep extraction.
- Use up to 80 percent less water to clean and get up to 90 percent water recovery across entire cleaning path with ReadySpace technology and Tennant's patented vacuum shoe design.

Cleaning Path: 710 mm  
Solution | Recovery Tank: 121 L | 106 L  
Water Lift: 1,790 mm  
Sound Level: 73 dBA  
Power Source: battery

# Vacuums

Versatile heavy-duty upright vacuums for everyday use



## V-CAN-12

### DRY CANISTER VACUUM

#### Applications

Cleans a wide range of environments on carpets and hard floors. Designed for offices, stores, hotels, restaurants and other similar environments.

#### Model Highlights

- Standard 3-stage filtration provided to clean floors while maintaining good air quality with optional HEPA cartridge.
- Quiet performance, engineered so that floors can be cleaned without disrupting work nearby.
- Construction with up to 55% recycled plastic.

Standard\* Floor Nozzle: 270 mm  
Tank Capacity: 12 L  
Power: 840-900 watts  
Power Source: corded



## V-CAN-16

### DRY CANISTER VACUUM

#### Applications

Cleans a wide range of environments on carpets and hard floors. Designed for offices, stores, hotels, restaurants and other similar environments.

#### Model Highlights

- Standard 3-stage filtration provided to clean floors while maintaining good air quality.
- Quiet performance, engineered so that floors can be cleaned without disrupting work nearby.
- Construction with up to 55% recycled plastic.
- HEPA cartridge as standard.

Standard\* Floor Nozzle: 270 mm  
Tank Capacity: 16L  
Power: 840-900 watts  
Power Source: corded





## V-BP-7

### BACKPACK VACUUM

#### Applications

Cleans small to large areas found in hospitality, health care and schools.

#### Model Highlights

- Maximise operator comfort with the ergonomic vacuum harness that distributes weight to the operator's hips rather than back.
- Increase applications with this 5.7 L vacuum that goes anywhere you go with tools for almost any surface.
- Standard with HEPA 4-stage filtration.

Standard\* Floor Nozzle: 241 mm  
Tank Capacity: 5.7 L  
Power: 850 watts  
Power Source: corded



## V-WD-27

### WET / DRY VACUUM

#### Applications

Clean wet and dry areas in found in hospitality, healthcare and schools.

#### Model Highlights

- Versatile, maneuverable, and light, removes liquids and dust with a 27 liter capacity tank.
- Compact parking for easy storage
- Reliable locking of flexible hose
- Trolley with on-board tool holder
- Cable hook for cord management

Standard\* Floor Nozzle: 270 mm  
Tank Capacity: 27 L  
Power: 1300 watts  
Power Source: corded



## V-WD-62

### WET / DRY VACUUMS

#### Applications

Clean wet and dry areas in found in hospitality, healthcare and schools.

#### Model Highlights

- Equipped with a user-friendly drain hose, this midrange wet/dry vacuum is maneuverable and easy to use.
- 2 independent motors for reliable performance
- Easy-to-use drain hose for tank emptying
- Accessories clip for parking in compact spaces
- Trolley with on-board tool holder
- Reliable locking of flexible hose
- Cable hook for cord management
- Optional tool holder

Standard\* Floor Nozzle: 405 mm  
Tank Capacity: 62 L  
Power: 2600 watts  
Power Source: corded



## V-WD-72

### WET / DRY VACUUMS

#### Applications

Clean wet and dry areas in found in hospitality, healthcare and schools.

#### Model Highlights

- Large-capacity wet/dry vacuum with smart features that make it easy to use.
- 3 independent motors
- Compact parking for easy storage
- Reliable locking of flexible hose
- Tipping trolley with on-board tool holder
- Cable hook for cord management

Standard\* Floor Nozzle: 405 mm  
Tank Capacity: 72 L  
Power: 3600 watts  
Power Source: corded



## V-SMU-36

### UPRIGHT VACUUM

#### Applications

Clean in tight areas, hallways, hotel meeting rooms and lobbies.

#### Model Highlights

- Increase productivity and cleaning coverage with onboard crevice and upholstery tools.
- Certified CRI Silver rating with HEPA filtration.

Cleaning Path: 370 mm  
Vacuum Bag: 3.6 L  
Sound Level: 70 dBA  
Power Source: corded



## V-WA-76

### WIDE AREA VACUUM

#### Applications

Vacuuming in small to large areas found in retail, health care, education, hospitality and office buildings.

#### Model Highlights

- Easily clean hard-to-reach areas with a low profile design that provides increased maneuverability .
- Increase operator ease-of-use and decrease training with one button operation.

Cleaning Path: 760 mm  
Vacuum Bag: 35.2 L  
Sound Level: 70 dBA  
Power Source: corded

# Speciality Machines

Rely on the extensive Tennant product line for everything you need to maintain a first-rate facility



## ASC-57

### ALL-SURFACE CLEANER

#### Applications

Multi functional cleaner cleans and rinses restrooms and other hard surfaces, blows dry the rinsed surfaces and recovers the dirty water.

#### Model Highlights

- Increase productivity and employee safety and morale with this touch-free method of cleaning.
- Go-anywhere, robust design for maximum cleaning uptime and years of reliable use.
- Comes complete with ten standard tools and accessories, including a telescopic vacuum wand and a separate expandable clean-air blower hose.

Solution | Recovery Tank: 57 L | 72 L  
Water Lift: 2,982 mm  
Sound Level: 82 dBA  
Power Source: corded

# TennantTrue®

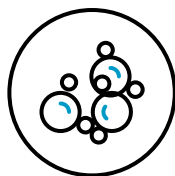
Optimizing equipment cleaning performance and providing the highest-quality parts, service, and support



## Service and Maintenance

Ensure optimal cleaning performance by selecting a TennantTrue® Service program provided by a network of factory-trained Tennant Service Representatives.

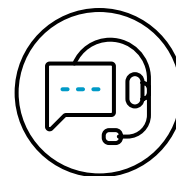
- Our direct service technicians and a constantly growing indirect service network cover Sydney, Melbourne, Brisbane, Adelaide, Perth and Auckland.
- TennantTrue Service responds to most service requests within 24-48 hours, depending on your service plan.



## Detergents and Cleaning Solutions

TennantTrue detergents offer environmentally safe packaging and features to support your green cleaning initiatives.

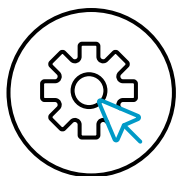
- Packaging is color coded for easy identification, training, and safety.
- Formulated for your Tennant and Nobles machines to eliminate harm to gaskets, seals, vacuum fans, or other critical components.
- All products use biodegradable surfactants and recyclable packaging.
- Tennant low-foam detergents deliver high-performance results.



## Technical Support

One call, complete support.

- Knowledgeable representatives available to address any floor-care need or product question.
- Expert recommendations from the professionals.
- Immediate access to your machine's service history performed by a Tennant Service representative through Tennant's ServiceLINK®.



## Parts

Only genuine TennantTrue® parts are designed specifically to fit with Tennant machines, delivering exceptional cleaning performance.

Every 30 minutes of extra cleaning = \$198 extra labor costs per month, or \$2,370 annually.\*

Reduce rework and extra labor costs by using only TennantTrue parts on your Tennant cleaning equipment.

- Reduce maintenance costs and machine wear.
- Minimize slip, trip, and fall accidents caused by oily or slippery floors and debris.
- Eliminate rework by picking up water and debris on the first pass.



## Financing, Pre-Owned, and Rental

- **Lease:** Make budgeting easier by utilizing our financial partners to lease your Tennant equipment.
- **Pre-Owned:** Get quality machines at a budget-friendly price. All Tennant pre-owned machines are refurbished and equipped with genuine TennantTrue parts, so you can ensure you're getting top value for your investment.
- **Rental:** Get the job completed on-time and within budget by renting Tennant equipment.

\*Based on a 7-day cleaning cycle with labor costs at \$13 per hour



# Seeing Is Believing

Tennant Company helps you succeed with outstanding cleaning performance and the highest-quality products, service and support.

## Rely on the Tennant Line of Floor-Care Solutions for:

- Durable sweepers and scrubbers built to withstand heavy use in harsh environments
- Reliable solutions – from equipment to coatings – that provide excellent performance day after day, year after year
- Increased productivity thanks to ergonomically designed machines and operator-training programs
- Maximum machine uptime from innovative engineering and groundbreaking technologies
- One of Australia's largest factory direct service networks of direct service technicians
- Peace of mind that comes from knowing your investment is protected by one of the industry's most comprehensive warranties

## Turning Insights into Innovation for over 130 Years

Tennant Company's commitment to understanding the floor-care needs of our customers has led to dozens of notable awards and honors, including:

- 2022 The Minnesota Census of Women in Corporate Leadership, recognized with special distinction for achieving gender parity on either their board of directors, among their executive officers, or both.
- 2022 Sanitary Maintenance – T16AMR, Distributor Choice Award Winner, Technology and Innovation Category,
- 2022 Twin Cities Business Magazine – Autonomous Solutions, Manufacturing Excellence Award
- 2018 IDEA Award – T600 Floor Scrubber, International Design Excellence Awards
- 2014 IDEA Award – B5 Battery Burnisher, International Design Excellence Awards
- 2013 GOOD DESIGN Award – T12 Rider Scrubber, Industrial Design Excellence
- 2012 Australian Business Awards – Orbio 5000-Sc, Top Honours
- 2011 R&D 100 Award Winner – 500ze, R&D Magazine
- 2011 Manufacturer of the Year Award – Manufacturers Alliance
- 2010 Clean Tech Tekne Award Winner – 500ze MN High Tech Association
- 2010 Innovation Award – 500ze– Ruban d'Honneur Winner
- 2009 Manufacturer of the Year Award, ABM Industries, Inc.
- 2009 Business Innovation of the Year – ec-H2O, European Business Awards
- 2009 Manufacturer of the Year Award – ec-H2O Technology – CleanNZ Trade Show, New Zealand
- 2008 Clean Tech Tekne Award Winner – ec-H2O – Mn High Tech Association
- 2008 R&D 100 Award Winner – ec-H2O, R&D Magazine
- 2007, 2008 & 2014 Best Small Companies, Forbes
- 2007 & 2014 America's Most Trustworthy Companies, Forbes

Headquartered in Minnesota, Tennant Company has the most extensive global field service network in the industry with manufacturing operations in Minneapolis, Minn.; Holland, Mich.; Louisville, Ky.; Uden, The Netherlands; the United Kingdom; São Paulo, Brazil; and Hefei, China. Tennant products are available in more than 80 countries.

**Lease. Pre-Owned. Rent.**  
**Tennant has flexible options that get you the machines you need, however you need them.**

For a demonstration or additional information, call **1800 226 843** or email **contactus@tennantco.com**

**Tennant Australia**  
Unit 2, 10 Johnston Crescent  
Horsley Park NSW 2175  
T: 1800 226 843 (FREE CALL)  
T: +61 2 9839 9700  
[www.tennantco.com.au](http://www.tennantco.com.au)  
[contactus@tennantco.com](mailto:contactus@tennantco.com)

**Tennant New Zealand**  
18 Onslow Ave, Papatoetoe,  
Auckland, 2104  
T: +64 9 253 9013  
F: +64 9 253 9015  
[www.tennantco.co.nz](http://www.tennantco.co.nz)  
[contactus@tennantco.com](mailto:contactus@tennantco.com)